

Robit H5

DTH Hammer QL50/DHD350



- ✓ **Lower fuel consumption**
- ✓ **Best in class performance**
- ✓ **Suitable for all conditions**
- ✓ **12 conversions to choose from**

Robit H5

Further. Faster.

Further. Faster.

Easily convertible for
EVERY rock drilling application

Robit
FURTHER. FASTER.

tel. +358 3 3140 3400 • sales@robitgroup.com • www.robitgroup.com

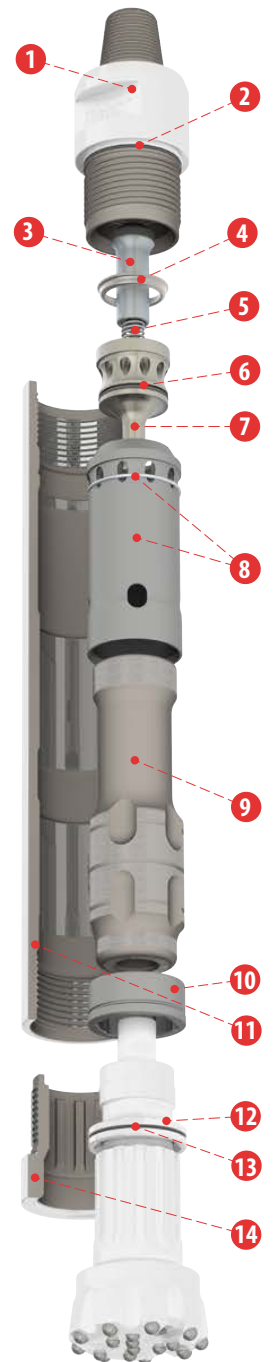
Follow Robit Plc on our social media channels:



DTH hammer for 140 mm (5½") - 165 mm (6½") diameter holes, with QL50 or DHD350 fitting

Complete Hammer

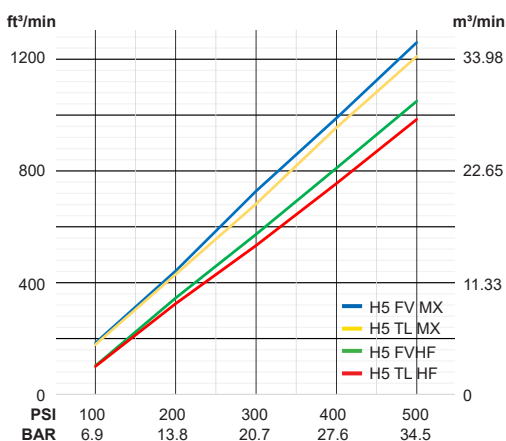
QL50	SL	HD	FV	MX	Part number	Description
QL50	HD	FV	MX	1281126	H5 QL50 HD FV MX API 3 1/2IN Reg Pin	
		HF	HF	1281128	H5 QL50 HD FV HF API 3 1/2IN Reg Pin	
	TL	MX	1281125	H5 QL50 HD TL MX API 3 1/2IN Reg Pin		
		HF	1281127	H5 QL50 HD TL HF API 3 1/2IN Reg Pin		
SL	SL	FV	MX	1281305	H5 QL50 SL FV MX API 3 1/2IN Reg Pin	
		HF	1281307	H5 QL50 SL FV HF API 3 1/2IN Reg Pin		
	TL	MX	1281304	H5 QL50 SL TL MX API 3 1/2IN Reg Pin		
		HF	1281306	H5 QL50 SL TL HF API 3 1/2IN Reg Pin		
DHD350	HD	FV	MX	1281241	H5 DHD350 HD FV MX API 3 1/2IN Reg Pin	
		HF	1281243	H5 DHD350 HD FV HF API 3 1/2IN Reg Pin		
	SL	FV	MX	1281379	H5 DHD350 SL FV MX API 3 1/2IN Reg Pin	
		HF	1281375	H5 DHD350 SL FV HF API 3 1/2IN Reg Pin		



Components

Ref	Description	Part number QL50	Part number DHD350
1	Top adaptor/Backhead HD (SL)	1281142 (1281300)	
2	Backhead O-ring	9003608	
3	Check valve	9003556	
4	Make up ring	1281144	
5	Check valve spring	9003555	
6	Air distributor O-ring	9003609	
7	Air distributor	1281143	
8a	Inner cylinder assembly - MX (Maximum Performance)	1281131	
8b	Inner cylinder assembly - HF (High Efficiency)	1281132	
9	Piston FV, Foot valved (TL, Tubeless)	1281139 (1281138)	1281247
10	Wear sleeve HD (SL)	1281133 (1281309)	
11	Guide bush FV (TL)	1281135 (1281134)	1281249
12	Bit retaining ring assembly (incl. 13, O-ring)	1281141	1281251
13	Bit retaining ring O-ring	1098824	
14	Chuck HD (SL)	1281140 (1281301)	1281250 (1281376)
	Service kit H5 incl. (2, 5, 6, 13)	1281281	
	Repair kit H5 HD (SL) incl. (2, 3, 4, 5, 6, 13, 14)	1281282 (1281344)	1281382 (1281381)
	Life Kit H5 HD (SL) FV API 3 1/2" Pin incl. (1, 10, 11, 14)	1281334 (1281345)	1281384 (1281383)
	Life Kit H5 HD (SL) TL API 3 1/2" Pin incl. (1, 10, 11, 14)	1281283 (1281380)	-

Air Consumption



Hammer Specifications

	Imperial	Metric
Weight (HD, less bit)	179.7 lbs	61.5 kg
Weight (SL, less bit)	119.0 lbs	54.0 kg
Length (less bit)	36.02"	915 mm
Outside Dia. (HD)	4.96"	126 mm
Outside Dia. (SL)	4.72"	120 mm
Discard Limit	4.49"	114 mm
Piston Weight (FV)	30.6 lbs	13.9 kg
Piston Weight (TL)	26.0 lbs	11.8 kg

HD = Heavy Duty
 SL = Slim Line
 FV = Foot Valved
 TL = Tubeless
 MX = Maximum Performance
 HF = High Efficiency

