

# Robit H5

DTH Hammer QL50/DHD350



- ✓ **Lower fuel consumption**
- ✓ **Best in class performance**
- ✓ **Suitable for all conditions**
- ✓ **12 conversions to choose from**

Robit H5

Further. Faster.

Further. Faster.

Easily convertible for  
EVERY rock drilling application

**Robit**  
FURTHER. FASTER.

tel. +358 3 3140 3400 • sales@robitgroup.com • www.robitgroup.com

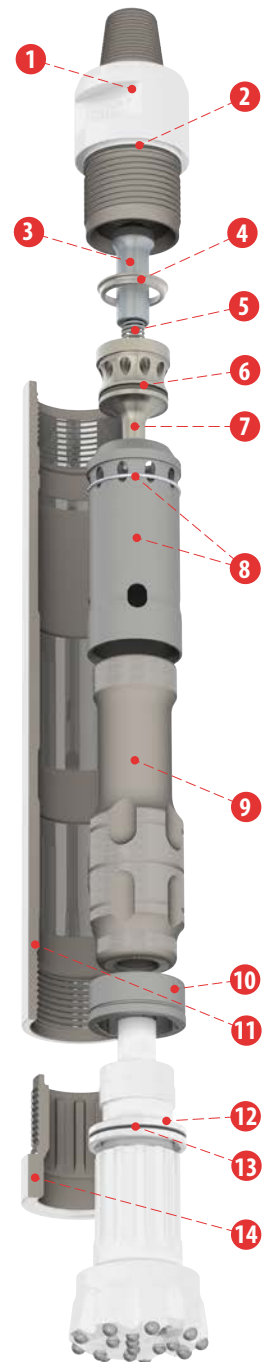
Follow Robit Plc on our social media channels:



DTH hammer for 127 mm / 5" (SL) – 165 mm (6 1/2") diameter holes, with QL50 or DHD350 fitting  
 140 mm / 5 1/2" (HD)

## Complete Hammer

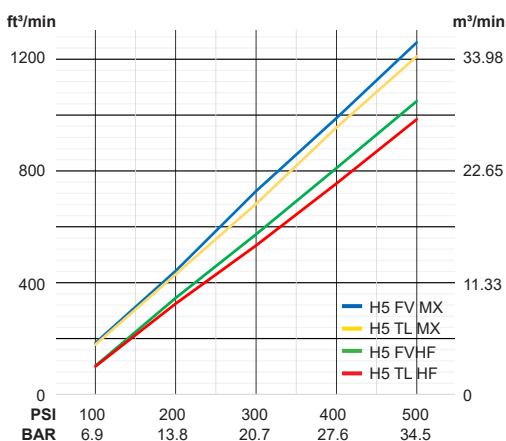
Model	Configuration	Part Number	Description
QL50	HD	FV MX 1281126	H5 QL50 HD FV MX API 3 1/2IN Reg Pin
		HF HF 1281128	H5 QL50 HD FV HF API 3 1/2IN Reg Pin
	SL	FV MX 1281305	H5 QL50 SL FV MX API 3 1/2IN Reg Pin
		HF HF 1281307	H5 QL50 SL FV HF API 3 1/2IN Reg Pin
	DHD350	FV MX 1281379	H5 DHD350 SL FV MX API 3 1/2IN Reg Pin
		HF HF 1281375	H5 DHD350 SL FV HF API 3 1/2IN Reg Pin
QL50	HD	TL MX 1281125	H5 QL50 HD TL MX API 3 1/2IN Reg Pin
		HF HF 1281127	H5 QL50 HD TL HF API 3 1/2IN Reg Pin
	SL	TL MX 1281304	H5 QL50 SL TL MX API 3 1/2IN Reg Pin
		HF HF 1281306	H5 QL50 SL TL HF API 3 1/2IN Reg Pin
	DHD350	TL MX 1281304	H5 QL50 SL TL MX API 3 1/2IN Reg Pin
		HF HF 1281306	H5 QL50 SL TL HF API 3 1/2IN Reg Pin



## Components

Ref	Description	Part number QL50	Part number DHD350
1	Top adaptor/Backhead HD (SL)	1281142 (1281300)	
2	Backhead O-ring	9003608	
3	Check valve	9003556	
4	Make up ring	1281144	
5	Check valve spring	9003555	
6	Air distributor O-ring	9003609	
7	Air distributor	1281143	
8a	Inner cylinder assembly - MX (Maximum Performance)	1281131	
8b	Inner cylinder assembly - HF (High Efficiency)	1281132	
9	Piston FV, Foot valved (TL, Tubeless)	1281139 (1281138)	1281247
10	Wear sleeve HD (SL)	1281133 (1281309)	
11	Guide bush FV (TL)	1281135 (1281134)	1281249
12	Bit retaining ring assembly (incl. 13, O-ring)	1281141	1281251
13	Bit retaining ring O-ring	1098824	
14	Chuck HD (SL)	1281140 (1281301)	1281250 (1281376)
	Service kit H5 incl. (2, 5, 6, 13)	1281281	
	Repair kit H5 HD (SL) incl. (2, 3, 4, 5, 6, 13, 14)	1281282 (1281344)	1281382 (1281381)
	Life Kit H5 HD (SL) FV API 3 1/2" Pin incl. (1, 10, 11, 14)	1281334 (1281345)	1281384 (1281383)
	Life Kit H5 HD (SL) TL API 3 1/2" Pin incl. (1, 10, 11, 14)	1281283 (1281380)	-

## Air Consumption



## Hammer Specifications

	Imperial	Metric
Weight (HD, less bit)	179.7 lbs	61.5 kg
Weight (SL, less bit)	119.0 lbs	54.0 kg
Length (less bit)	36.02"	915 mm
Outside Dia. (HD)	4.96"	126 mm
Outside Dia. (SL)	4.72"	120 mm
Discard Limit	4.49"	114 mm
Piston Weight (FV)	30.6 lbs	13.9 kg
Piston Weight (TL)	26.0 lbs	11.8 kg

HD = Heavy Duty  
 SL = Slim Line  
 FV = Foot Valved  
 TL = Tubeless  
 MX = Maximum Performance  
 HF = High Efficiency

