

Robit H8

DTH Hammer QL80/DHD380



- ✓ **Lower fuel consumption**
- ✓ **Best in class performance**
- ✓ **Suitable for all conditions**
- ✓ **12 conversions to choose from**



**Easily convertible for
EVERY rock drilling application**

Robit
FURTHER. FASTER.

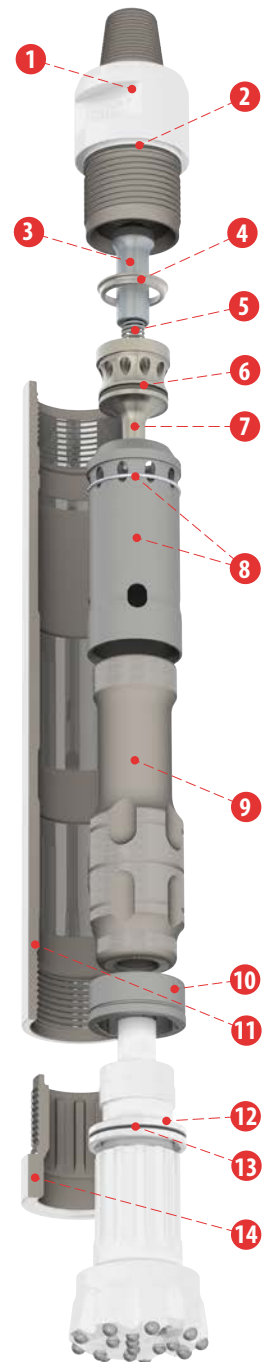
tel. +358 3 3140 3400 • sales@robitgroup.com • www.robitgroup.com

Follow Robit Plc on our social media channels:     

DTH hammer for 203 mm / 8" (SL) – 254 mm (10") diameter holes, with QL80 or DHD380 fitting
 216 mm / 8 1/2" (HD)

Complete Hammer

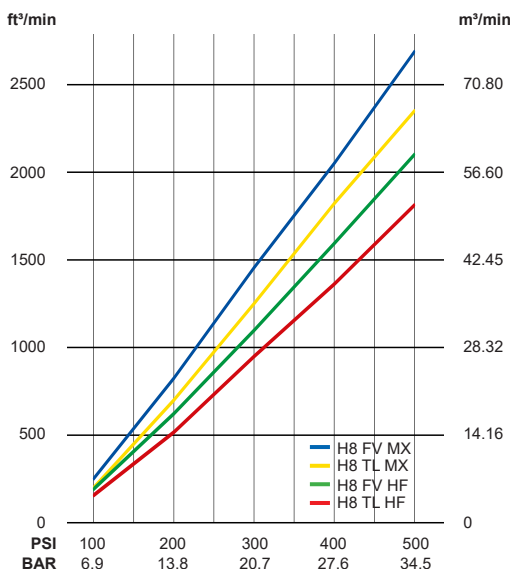
	QL80	HD	FV	MX	1281094	H8 QL80 HD FV MX API 4 1/2IN Reg Pin
			HF	HF	1281096	H8 QL80 HD FV HF API 4 1/2IN Reg Pin
		SL	TL	MX	1281093	H8 QL80 HD TL MX API 4 1/2IN Reg Pin
			HF	HF	1281095	H8 QL80 HD TL HF API 4 1/2IN Reg Pin
		SL	FV	MX	2002987	H8 QL80 SL FV MX API 4 1/2IN Reg Pin
			HF	HF	2002988	H8 QL80 SL FV HF API 4 1/2IN Reg Pin
	DHD380	HD	TL	MX	2002989	H8 QL80 SL TL MX API 4 1/2IN Reg Pin
			HF	HF	2002990	H8 QL80 SL TL HF API 4 1/2IN Reg Pin
		HD	FV	MX	1281387	H8 DHD380 HD FV MX API 4 1/2IN Reg Pin
			HF	HF	1281388	H8 DHD380 HD FV HF API 4 1/2IN Reg Pin
		SL	FV	MX	1281390	H8 DHD380 SL FV MX API 4 1/2IN Reg Pin
			HF	HF	1281389	H8 DHD380 SL FV HF API 4 1/2IN Reg Pin



Components

Ref	Description	Part number QL80	Part number DHD380
1	Top adaptor/Backhead HD (SL)	1281108 (2002982)	
2	Backhead O-ring	9003540	
3	Check valve	9003436	
4	Make up ring	1281110	
5	Check valve spring	9003435	
6	Air distributor O-ring	9003542	
7	Air distributor	1281109	
8a	Inner cylinder assembly - MX (Maximum Performance)	1281116	
8b	Inner cylinder assembly - HF (High Efficiency)	1281117	
9	Piston FV, Foot valved (TL, Tubeless)	1281103 (1281102)	1281371
10	Wear sleeve HD (SL)	1281099 (2002983)	
11	Guide bush FV (TL)	1281101 (1281100)	1281372
12	Bit retaining ring assembly (incl. 13, O-ring)	1281107	1281369
13	Bit retaining ring O-ring	1119422	
14	Chuck HD (SL)	1281106 (2002986)	1281370 (1281373)
	Service kit H8 incl. (2, 5, 6, 13)	1281287	
	Repair kit H8 HD (SL) incl. (2, 3, 4, 5, 6, 13, 14)	1281288 (1281340)	1281408 (1281412)
	Life Kit H8 HD (SL) FV API 3 1/2" Pin incl. (1, 10, 11, 14)	1281336 (1281341)	1281410 (1281411)
	Life Kit H8 HD (SL) TL API 3 1/2" Pin incl. (1, 10, 11, 14)	1281289 (1281406)	-

Air consumption



Hammer Specifications

	Imperial	Metric
Weight (HD, less bit)	441.0 lbs	200.0 kg
Weight (SL, less bit)	379.2 lbs	172.0 kg
Length (less bit)	49.02"	1245 mm
Outside Dia. (HD)	7.64"	194 mm
Outside Dia. (SL)	7.24"	184 mm
Discard Limit	6.85"	174 mm
Piston Weight (FV)	103.2 lbs	46.8 kg
Piston Weight (TL)	91.7 lbs	41.6 kg

HD = Heavy Duty
 SL = Slim Line
 FV = Foot Valved
 TL = Tubeless
 MX = Maximum Performance
 HF = High Efficiency

