

# Robit H6

DTH Hammer QL60/DHD360



- ✓ **Lower fuel consumption**
- ✓ **Best in class performance**
- ✓ **Suitable for all conditions**
- ✓ **12 conversions to choose from**

Robit H6

Further. Faster.

Further. Faster.

Easily convertible for  
EVERY rock drilling application

**Robit**  
FURTHER. FASTER.

tel. +358 3 3140 3400 • sales@robitgroup.com • www.robitgroup.com

Follow Robit Plc on our social media channels:

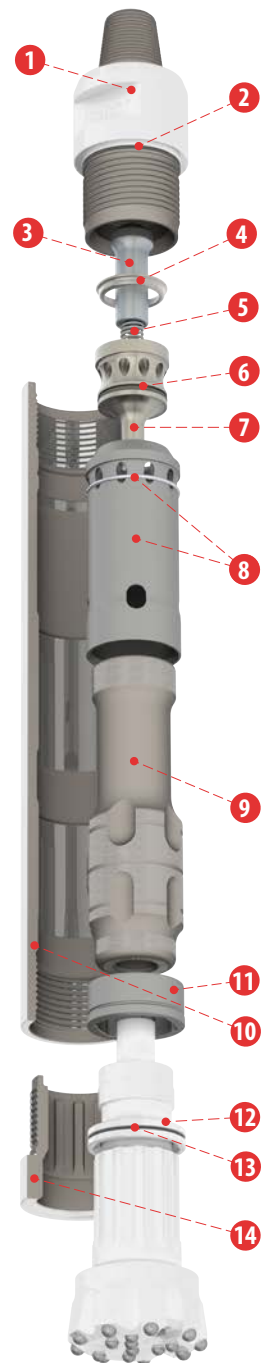




DTH hammer for 152 mm / 6" (SL) - 216 mm / 8 1/2" diameter holes (QL60 or DHD360 fitting)  
 158 mm / 6 1/4" (HD)

## Complete Hammer

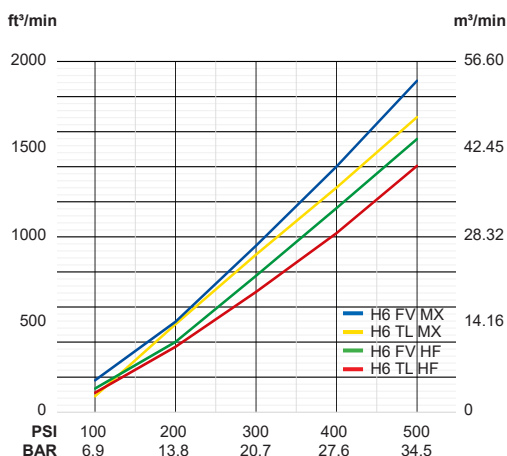
Ref	Description	Part number QL60	Part number DHD360	Drill & blast	Well-drilling			
QL60	HD	FV	MX 1281089	H6 QL60 HD FV MX API 3 1/2IN Reg Pin	■	■		
		HF	1281091	H6 QL60 HD FV HF API 3 1/2IN Reg Pin	■	■		
		TL	MX 1281088	H6 QL60 HD TL MX API 3 1/2IN Reg Pin	■	■		
		HF	1281090	H6 QL60 HD TL HF API 3 1/2IN Reg Pin	■	■		
		SL	FV	MX 1281297	H6 QL60 SL FV MX API 3 1/2IN Reg Pin	■	■	
			HF	1281299	H6 QL60 SL FV HF API 3 1/2IN Reg Pin	■	■	
	TL		MX 1281296	H6 QL60 SL TL MX API 3 1/2IN Reg Pin	■	■		
	HF		1281298	H6 QL60 SL TL HF API 3 1/2IN Reg Pin	■	■		
	DHD360		HD	FV	MX 1281392	H6 DHD360 HD FV MX API 3 1/2IN Reg Pin	■	■
			HF	1281394	H6 DHD360 HD FV HF API 3 1/2IN Reg Pin	■	■	
		SL	FV	MX 1281391	H6 DHD360 SL FV MX API 3 1/2IN Reg Pin	■	■	
		HF	1281393	H6 DHD360 SL FV HF API 3 1/2IN Reg Pin	■	■		



## Components

Ref	Description	Part number QL60	Part number DHD360
1	Top adaptor/Backhead HD (SL)	1281077 (1281292)	
2	Backhead O-ring	1098881	
3	Check valve	9003390	
4	Make up ring	1281080	
5	Check valve spring	9003388	
6	Air distributor O-ring	1242029	
7	Air distributor	1281068	
8a	Inner cylinder assembly - MX (Maximum Performance)	1281114	
8b	Inner cylinder assembly - HF (High Efficiency)	1281115	
9	Piston FV, Foot valved (TL, Tubeless)	1281078 (1281074)	1281402
10	Wear sleeve HD (SL)	1281069 (1281308)	
11	Guide bush FV (TL)	1281079 (1281074)	1281403
12	Bit retaining ring assembly (incl. 13, O-ring)	1281073	1281401
13	Bit retaining ring O-ring	1098846	
14	Chuck HD (SL)	1281072 (1281293)	1281400 (1281399)
	Service kit H6 incl. (2, 5, 6, 13)	1281284	
	Repair kit H6 HD (SL) incl. (2, 3, 4, 5, 6, 12, 14)	1281285 (1281342)	1281396 (1281395)
	Life Kit H6 HD (SL) FV API 3 1/2" Pin incl. (1, 10, 11, 14)	1281335 (1281343)	1281398 (1281397)
	Life Kit H6 HD (SL) TL API 3 1/2" Pin incl. (1, 10, 11, 14)	1281286 (1281407)	-

## Air Consumption



## Hammer Specifications

	Imperial	Metric
Weight (HD, less bit)	164.2 lbs	74.5 kg
Weight (SL, less bit)	143.3lbs	65.0 kg
Length (less bit)	39.92"	1014 mm
Outside Dia. (HD)	5.75"	146 mm
Outside Dia. (SL)	5.51"	140 mm
Discard Limit	5.12"	130 mm
Piston Weight (FV)	45.2 lbs	20.5 kg
Piston Weight (TL)	38.6lbs	17.5kg

HD = Heavy Duty  
 SL = Slim Line  
 FV = Foot Valved  
 TL = Tubeless  
 MX = Maximum Performance  
 HF = High Efficiency

